



User's manual

# Jogger

---





**WARNING:** AVOID SERIOUS INJURY FROM FALLING OR SLIDING OUT.

NEVER LEAVE CHILD UNATTENDED.

ALWAYS KEEP CHILD IN VIEW.

IMPORTANT: KEEP THESE INSTRUCTIONS FOR FUTURE REFERENCE.

A CHILD'S SAFETY IS YOUR RESPONSIBILITY.

ALWAYS USE THE SEAT HARNESS.

ALWAYS BE SURE TO ENGAGE PARKING BRAKES WHEN IN STAND STILL  
THIS VEHICLE IS SUITABLE FOR ONE CHILD.

## IMPORTANT

- READ THESE INSTRUCTIONS CAREFULLY BEFORE USE AND KEEP THEM FOR FUTURE REFERENCE.
- YOUR CHILDREN'S SAFETY MAY BE AFFECTED IF YOU DO NOT FOLLOW THESE INSTRUCTIONS.
- APPLY BRAKE WHEN PARKING THE JOGGER.

## GENERAL INFORMATION & SAFETY

- Front wheel must be kept in-line for exercise.
- Follow all instructions carefully. Incorrect use will cause damage to push chair.
- This product has been designed to take the maximum weight of 110lbs (50kg).
- Children should be harnessed in at all times and should never be left unattended.
- IMPORTANT: It is important for your child's safety that the harness be correctly fitted and adjusted. If not adjusted correctly in accordance with the instructions, the stability of the Jogger will be compromised.
- The harness and seat belt are not a substitute for proper adult supervision.
- The child should be clear of moving parts while making adjustments.
- IMPORTANT - DANGER: It is important that care is taken to ensure that children are kept clear of the Jogger when folding or unfolding. Pinch points and scissoring actions are unavoidable during these operations
- Do not carry additional children, goods or accessories in or on this push chair except as permitted in this manual. They may cause the Jogger to become unstable or place unneeded stress on the Jogger that could lead to breakage.
- Overloading, incorrect folding and the use of accessories, e.g. child seats, bag hooks, rain covers, buggy boards, etc., other than those approved by the manufacturer may damage or break this Jogger.
- Any damage caused by the use of accessories not supplied by manufacturer will not be covered by the terms of our warranty.
- Never leave child in the Jogger when ascending or descending stairs or escalators or when travelling on other forms of transport.
- The Jogger should always open and fold easily. Do not force it. It may be necessary to re-read the instructions.
- Negotiate curbs and rough ground carefully. Repeated impact will cause damage to the push chair.
- Never allow children to stand on the footrest.
- Do not leave the Jogger exposed to heat, i.e., by a radiator or in direct sunlight.
- Do not place items on the top of the hood as it may cause damage to the canopy.

## PARTS

FRONT WHEEL

REAR WHEELS

FRAME

CANOPY

SEAT FABRIC

## 1. FRAME

---

Unpack Jogger from box and set wheels aside.

Push foot plate of Jogger away from handle by pushing curved crossbar up and out.



Audible click will be heard when Jogger frame is completely unfolded.



Flip Jogger to upright position.



Clip lower belting around frame to secure seat fabric.



## 2. FRONT WHEEL

---

To install front wheel, lay jogger on it's back so handle and rear axles are touching the floor.

Engage safety lock on both sides of the fork.  
Check before each use.

NOTE: Safety Lock both sides of fork.



Front Brake fine adjustment knob.



- (A) Insert the Front Wheel into the fork tips by aligning the axle flats with the fork tip flat surfaces.
- (B) Tighten by turning the wheel lever and securing the other side.
- (C) Close the wheel lever making sure that it is flush with the tubing. Be sure not to over tighten.



### 2A. FRONT WHEEL IN-LINE LOCKING

---

The in-line locking mechanism is located behind the front wheel pivot point.

Pull and rotate knob to lock and unlock. Image shows unlocked.



Image now shows the wheel locked in-line.  
Pull and rotate mechanism to unlock.



### 3. REAR WHEEL

---

To install, gently slide the rear wheel's axle into the frames supporting axle hole until you hear it click onto place.

To remove, simply push down the spring lock tab while pulling out on the wheel.



### 3A. REAR WHEEL PARKING BRAKE

---

To apply the parking brake:

Press down on the foot bar..

Disengage the brake:

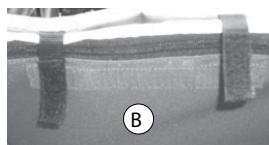
Pull up on the foot bar.



### 4. SAFETY HARNESS

---

Adjusting safety harness:



(A) Unclip hooks.

(B) Remove fleece lining [Velcro tabs shown above].



Unthread harness straps from fleece lining.

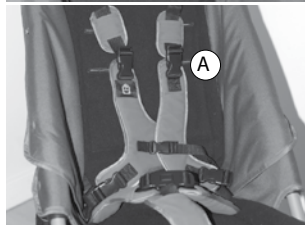
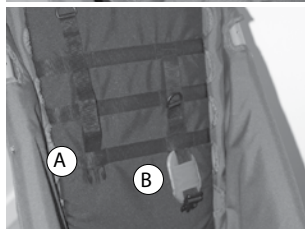
- (A) Adjust shoulder straps to desired height using the loops on the seat back.
- (B) Slide the plastic guide up and down to adjust strap length.

Once fitting is complete reassemble the fleece lining.

- (A) Clip shoulder strap buckle to chest harness.

To adjust the length of the center strap, move the plastic guide up and down.

For additional instruction refer to video guide



## 5. RECLINING SEAT

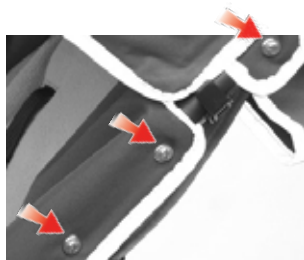
Simply adjust the recline strap length to desired degree of recline.

Unlock the buckle for maximum recline.



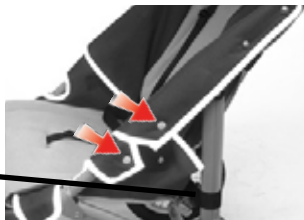
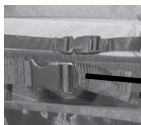
## 6. REMOVING SEAT FABRIC

Using a phillips head screw driver unscrew hardware from the frame.



Unsnap fasteners on both sides of jogger.

Unlock seat strap from frame, buckle is suspended across the back of the jogger.



Unloop Velcro Strap through the D-ring, underneath the foot well.

**NOTE: REMOVE ALL RIGID PARTS BEFORE WASHING**

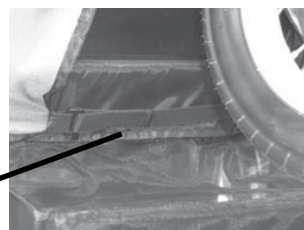
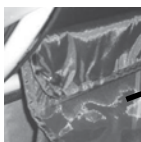
Joggers are shipped with Seat pre-assembled. Assembly/Removal instructions are given if any pre-assembly items are removed for cleaning or replacement, refer to page 12 for additional information.



## 7. SHOPPING BASKET

Secure front basket flap by snapping around the lower foot-well crossbar.

Detail of front shopping basket snaps.



Wrap rear basket straps around the frame and loop back through the D-ring. Secure the Velcro strap.

**NOTE: The D-ring loops are at the rear of the basket.**



## 8. CANOPY

---

Fasten the canopy to the portion of the upper frame that is not covered by fabric. Small holes in the crest of the frame tubing accept the canopy. Be sure there are NO obstructions (fabric or brake lines) between the canopy clip and the frame. There is a small plastic nipple on the canopy mechanism that fits into the hole in the frame.

Hook the wire on the back side of the canopy mechanism and then close the lever by pressing it to the frame. DO NOT FORCE TO CLOSE! Double check for obstructions (fabric or brake line/ be sure nipple is inserted to frame).



## 9. HANDLE HEIGHT

---

Unlock lever on both sides of handle. Adjust to height. Then relock.





## 10. FOLDING

---

Squeeze mechanism located below the handle.  
(Mechanism located on Both Sides)



Fold jogger back.



Secure Jogger in folded position with recline strap.



## 11. ATTENDANT STRAP

---

Make sure safety wrist strap is secured properly around your wrist whenever your child is in the jogger.



## 12. OPTIONAL ACCESSORIES: SEAT AND BACK LINER

---

Using the provided straps with the Seat & Back Liners, feed the straps through the slots in Jogger seat & back.



Place the Back Liner Straps into the slot at the height where you want the laterals will provide support.



The Seat Liner Straps will go through the lowest slots.



Clip the straps for both the Seat & Back Liners to each other on the back side of the jogger and tighten until secure.

**NOTE:** The Jogger Chest Harness should lay over the top of the Back Liner for correct positioning. The Jogger 3-Point lap belt can be fed through the 3 holes of the Seat Liner for optional positioning.



### 13. OPTIONAL ACCESSORIES: HEAD REST

---

Use the strap provided with the Optional Head Rest to secure it to the Jogger.



Thread the straps through the slots on the Jogger.



Clip the straps together on the back side of the Jogger and tighten to secure it.



## LIMITED WARRANTY

Bergeron by Design warrants to the original retail purchaser of the Special Tomato® product, that if any part or component proves defective in material or workmanship within two years of the purchase date, the defective part will be repaired or replaced [ at Bergeron by Design's discretion ] free of charge. Warranty service may be performed by an authorized service center or [ at Bergeron by Design's discretion ] the factory.

This warranty does not cover normal wear and tear, or damage caused by accident or misuse.

To exercise this limited warranty, the user should first obtain a Return Authorization Number from the dealer the Special Tomato® product was purchased from. The product must be delivered charges pre-paid [ UPS recommended ] to the factory or to an authorized service center, together with a copy of the original invoice, the Return Authorization Number and a written description of the problem

## MAINTENANCE AND REPAIR

This stroller requires regular maintenance by the user. Regularly check all rivets and connecting devices for tightness and security. Inspect all brakes, wheels and tires and replace or repair if necessary. Check all safety devices for correct operation, in particular the primary and secondary locks. These should be free to move at all times. Never continue to use a product that is not structurally sound.

- We recommend a service every 12 months.
- If wheels squeak, lubricate sparingly with Teflon or silicone coating. Do NOT use oil or grease based products, as this will attract dirt, which will clog the movement.
- Only manufacturer replacement parts should be used. It may be unsafe to use parts not supplied by manufacturer.

## CLEANING

- Clean frame with a damp cloth and a mild detergent and dry thoroughly.
- If the stroller chassis parts have been exposed to salt water, we recommend that they be rinsed down with fresh (tap) water as soon as possible.
- The canopy may be sponged lightly using a damp cloth and a mild detergent. The seat cover, head cushion, lateral pads and harness pads maybe washed. Line dry thoroughly before reuse.
- Do not fold or store the product while wet and never store in a damp environment, This can cause mildew to form.

The manufacturer reserves the right to make design changes to any of their products as part of their continuous design improvement program.

## CUSTOMER SERVICE

Contact your dealer directly. Or contact the European Authorized Representative.

## NOTICE

No part of this document may be photocopied, reproduced, transmitted, transcribed, stored in a retrieval system or translated to another language or computer language, in any form or by any means, electronic, mechanical, magnetic, optical, chemical, manual, or otherwise without the prior written consent of Bergeron by Design.

Use only Special Tomato® accessories and parts on Special Tomato® products. Special Tomato® parts are not interchangeable with other manufactures' products. Replace any worn parts immediately for safety. © Bergeron By Design



IMPORTANT- WARRANTY WILL BE VOID IF DEFACED OR REMOVED

Your stroller is guaranteed to be free from any manufacturing defects for a period of 2 years from the date of purchase under normal use and provided it is used in compliance with the operating instructions. This warranty extends only to the original retail purchaser and is only valid when supplied with proof of purchase. Please retain proof of purchase with this Limited Warranty.

Should a repair be needed please contact the retailer from whom the product was purchased.

## PLEASE NOTE THAT THE WARRANTY WILL NOT BE APPLICABLE IF:

- A fault is the cause of misuse or poor maintenance.
- Repairs are carried out by a third party.
- The stroller is faulty due to general wear and tear which is the result of everyday use.
- A stroller is damaged as a result of an accident.
- The manufacturer is not satisfied that the stated warranty terms and conditions have been met.



**MANUFACTURED BY**  
BERGERON HEALTH CARE  
15 SOUTH SECOND STREET  
DOLGEVILLE, NY 13329

**PRODUCT CODE:** \_\_\_\_\_

**PRODUCT DESCRIPTION:** \_\_\_\_\_

**COUNTRY OF ORIGIN:** CHINA

**AUTHORISED  
EUROPEAN  
REPRESENTATIVE**

GLOBAL CAREHAB  
ROSENVANGS ALLE 32  
8260 VIBY J  
DENMARK

TELEPHONE: +45 24 65 55 50  
WEB SITE: [www.globalcarehab.com](http://www.globalcarehab.com)

**DATE OF MANUFACTURE:** \_\_\_\_\_



Bergeron By Design  
15 South Second Street  
Dolgeville, New York 13329  
T 1 315 429 8407  
F 1 315 429 8862



© 2009 Bergeron By Design  
The information contained herein is subject to change without notice.  
Bergeron By Design shall not be liable for technical errors or omissions herein.